

# **FORSYTH PARK MASTER PLAN COMMUNITY ENGAGEMENT RESULTS DESIGN OPTION PHASE**



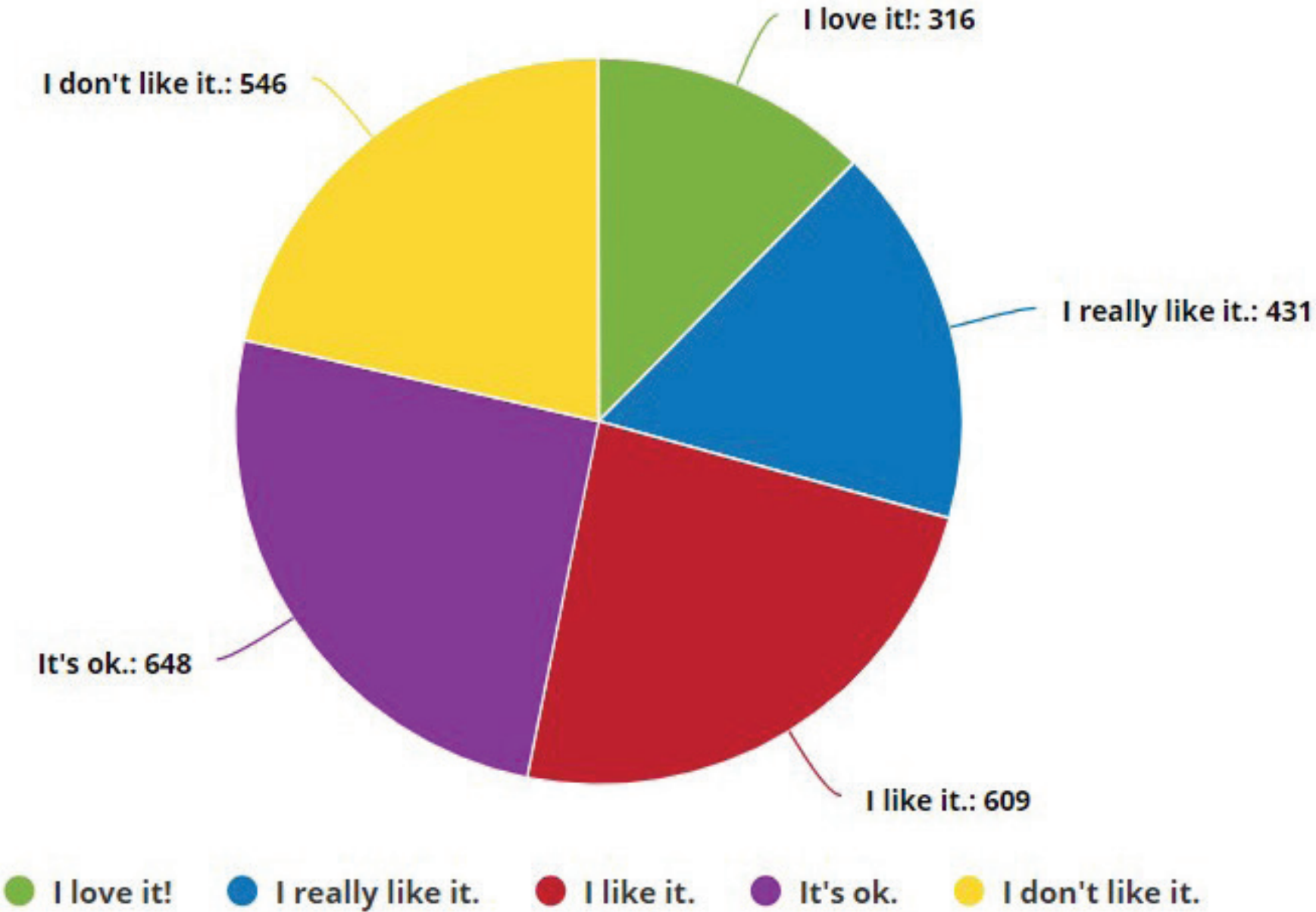
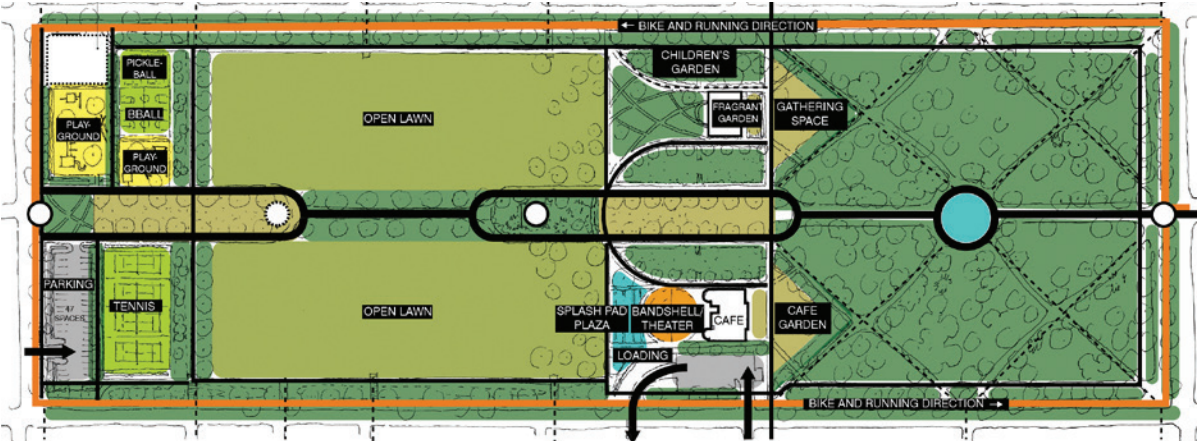
# COMMUNITY ENGAGEMENT FEEDBACK

Q1. How do you feel about Design Option 1?

2550 answers

Pie

Bar



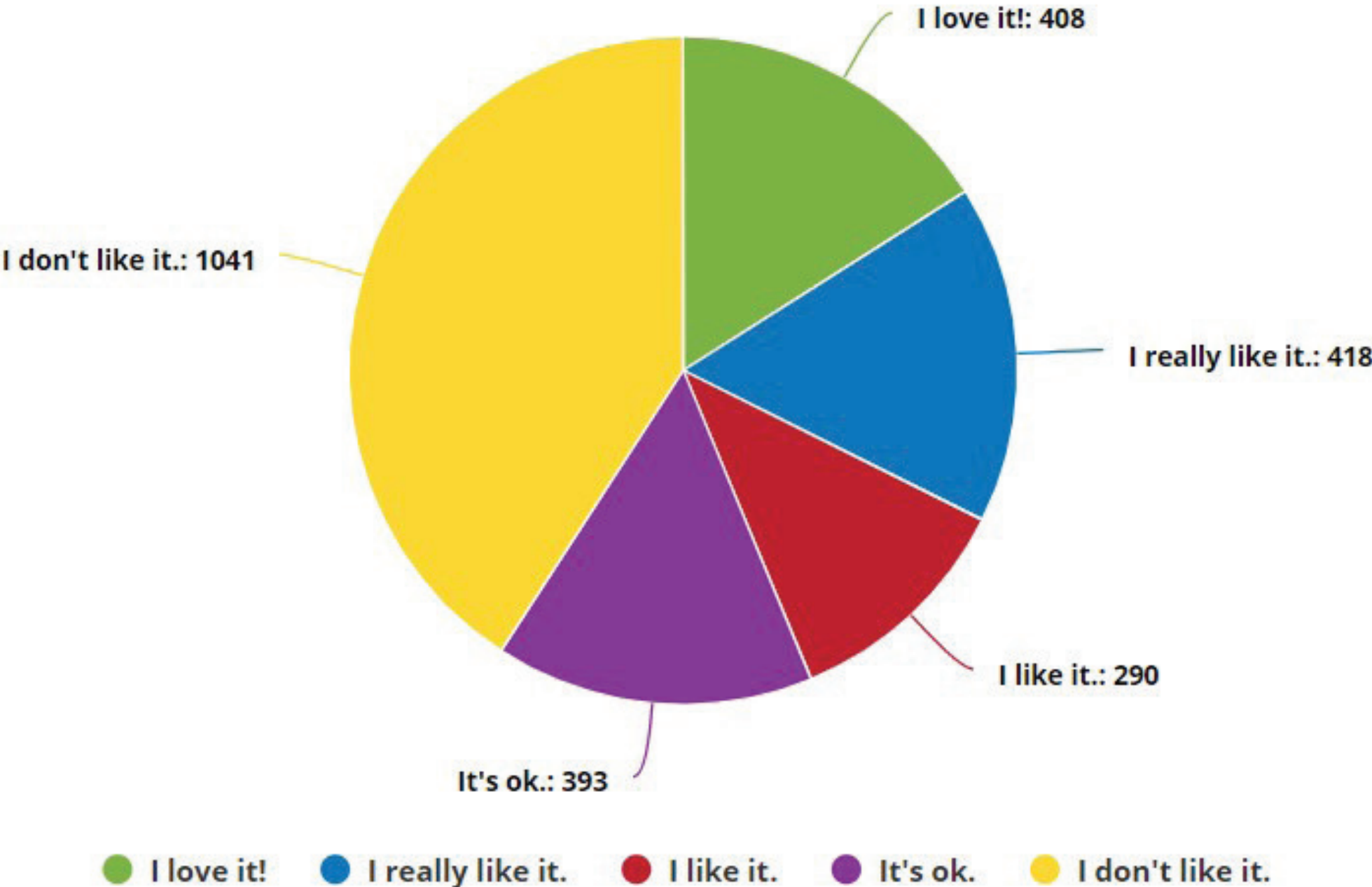
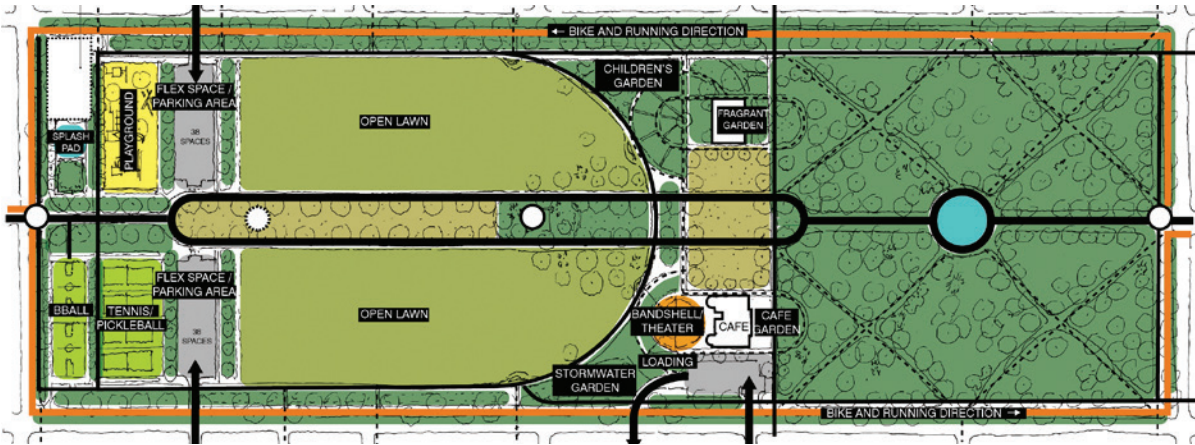
# COMMUNITY ENGAGEMENT FEEDBACK

Q2. How do you feel about Design Option 2?

2550 answers

Pie

Bar



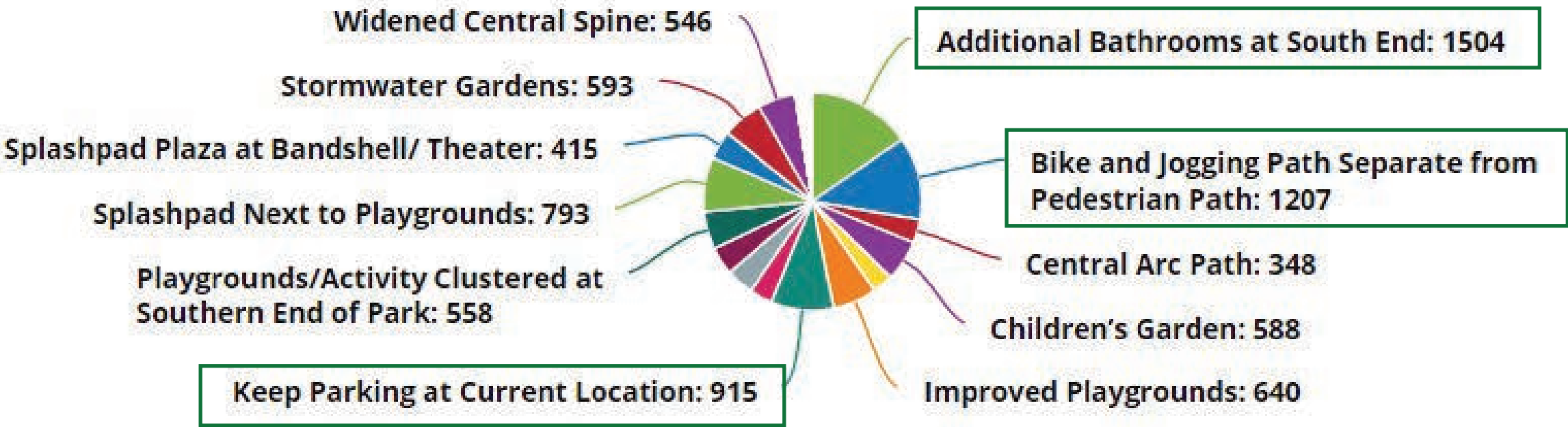
# COMMUNITY ENGAGEMENT FEEDBACK

Q4. Which of the proposed features do you like most?

2550 answers

Pie

Bar

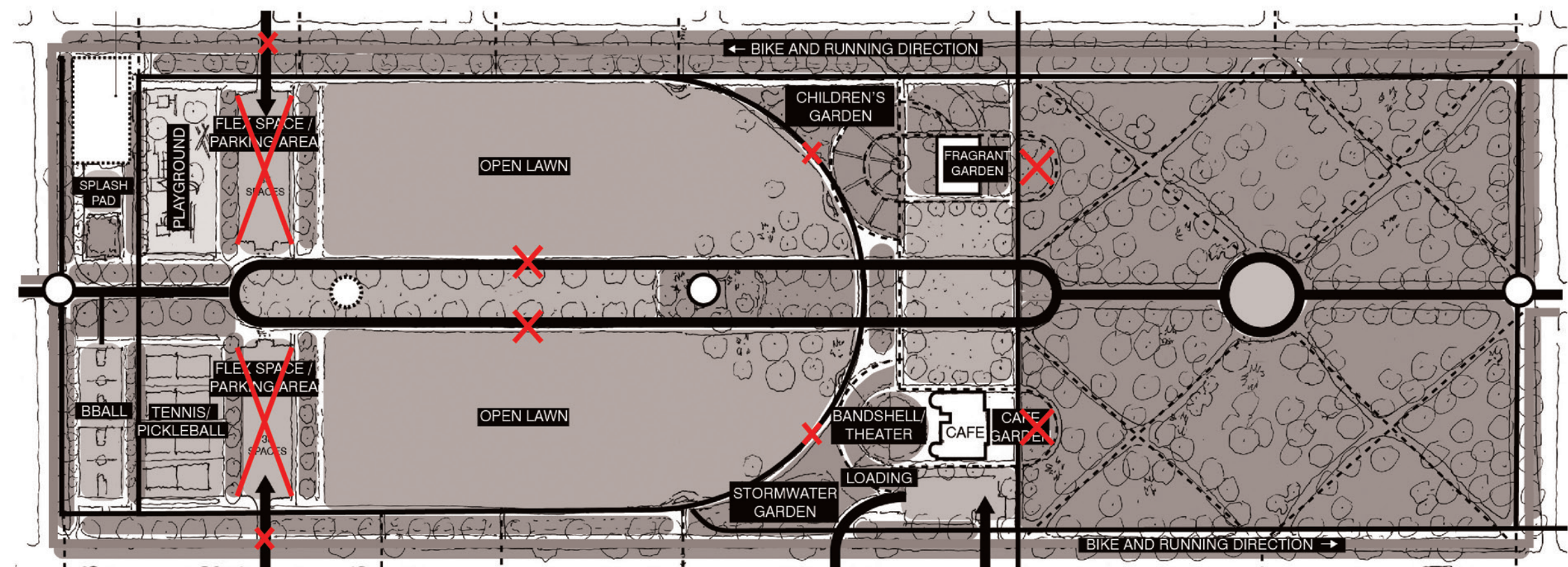
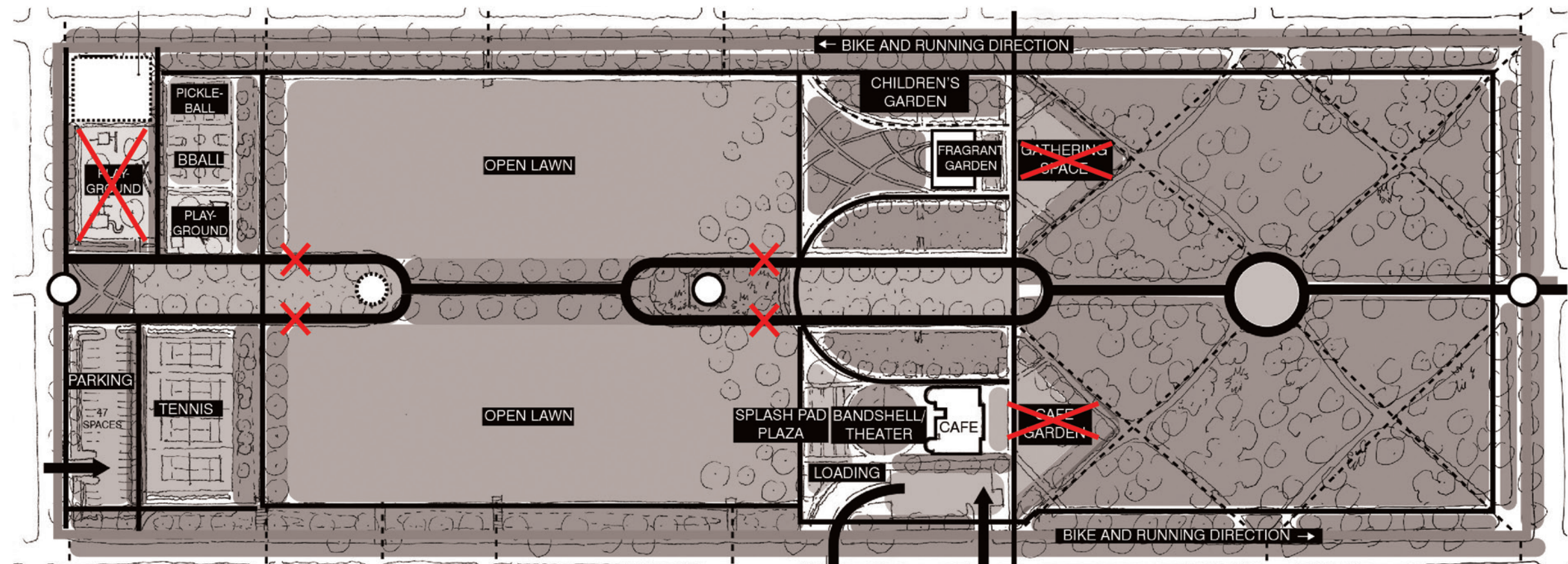


- Additional Bathrooms at South End
- Bike and Jogging Path Separate from Pedestrian Path
- Central Arc Path
- Children's Garden
- Crushed Gravel Seating Areas
- Improved Playgrounds
- Keep Parking at Current Location
- Move Parking North of Activity Cluster
- New Monument
- Pickleball Courts



**DO NOT PURSUE**

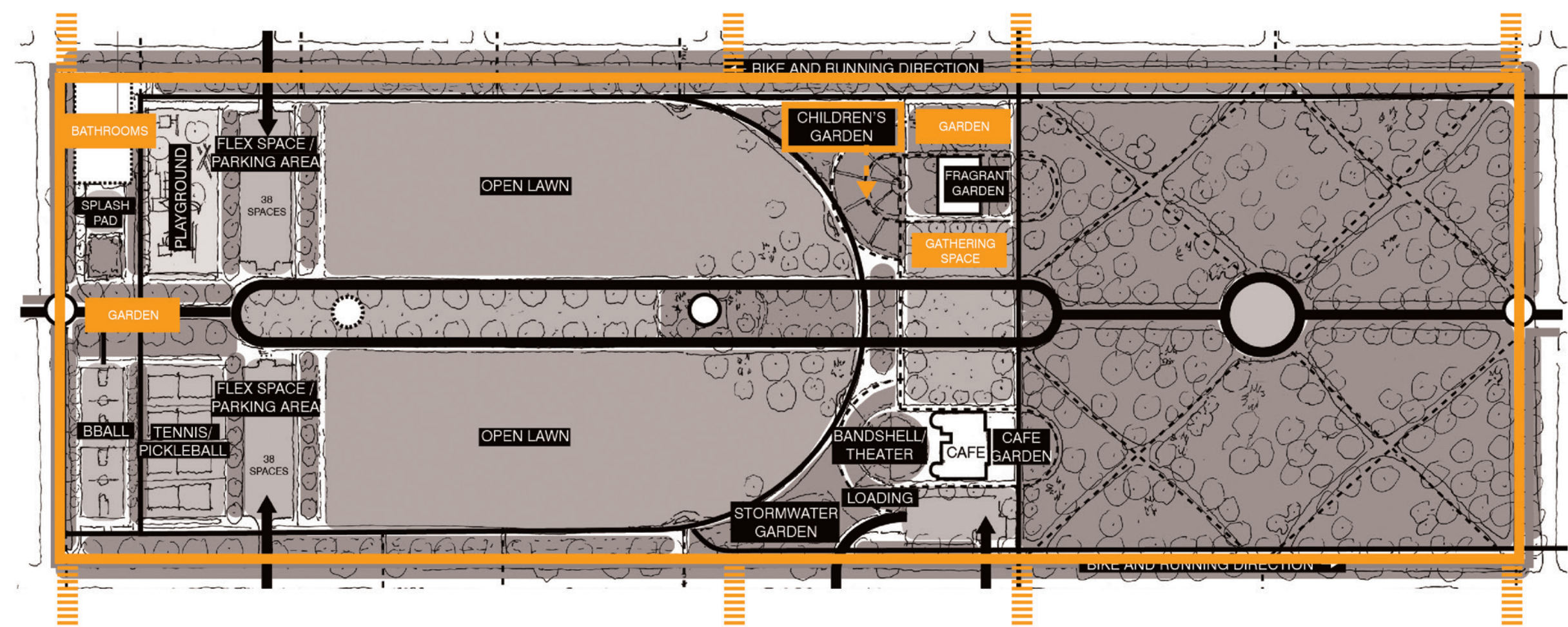
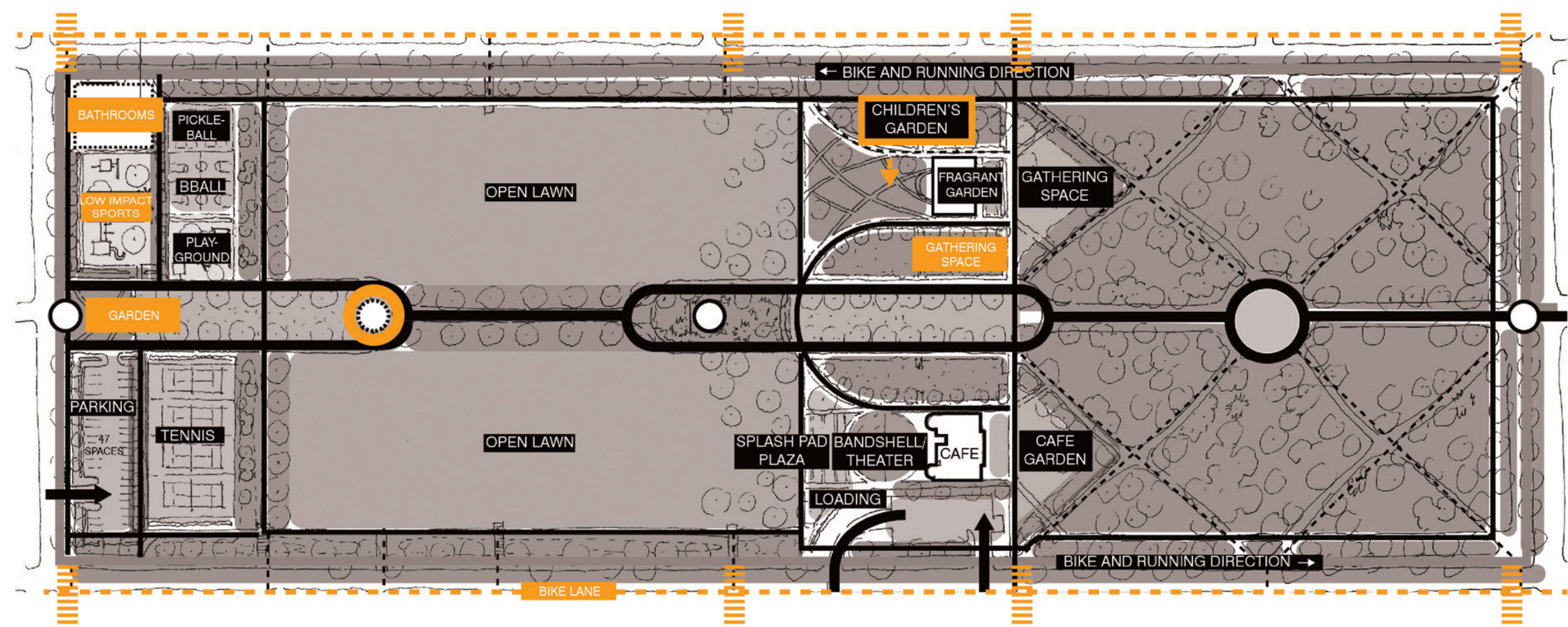
- Arching path connecting East and West
- Additional parking in park
- New garden or gathering spaces in North section
- Paths on outer edge of central spine
- Playground directly adjacent to street





# PURSUE

- Bathrooms
- Dedicated bike lane
- Traffic calming measures
- New monument / art
- New garden and gathering spaces
- Children's garden (closer to center of park)
- More events
- Improved bandshell
- Bike lane located in street \*





## MAINTAIN

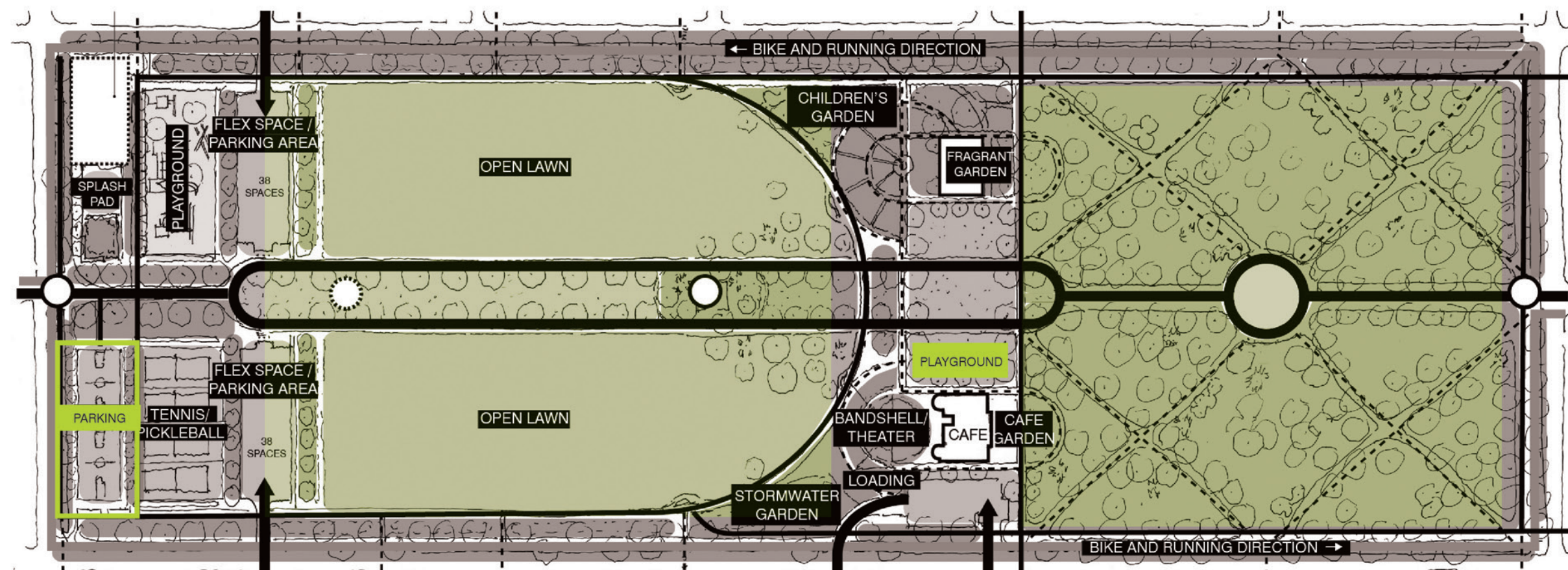
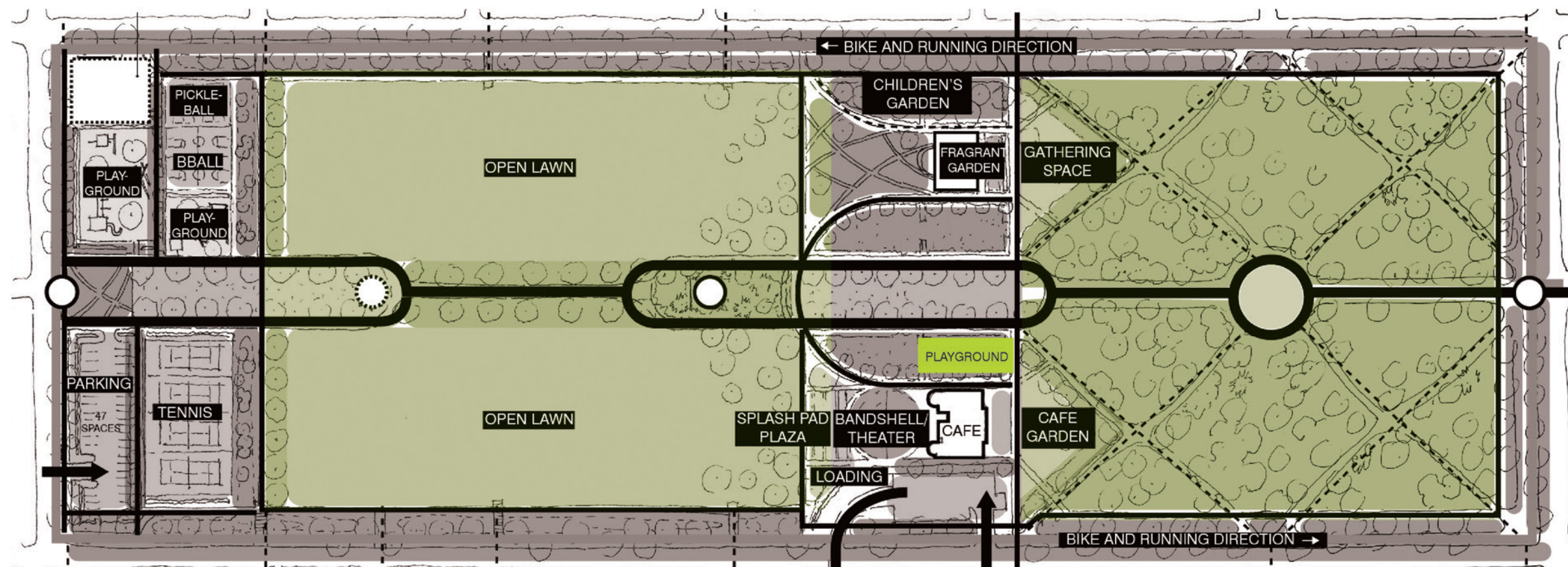
As much existing green space as possible

Parking at existing location

Rotary Club playground

Tree canopy

Historic integrity





DO NOT PURSUE

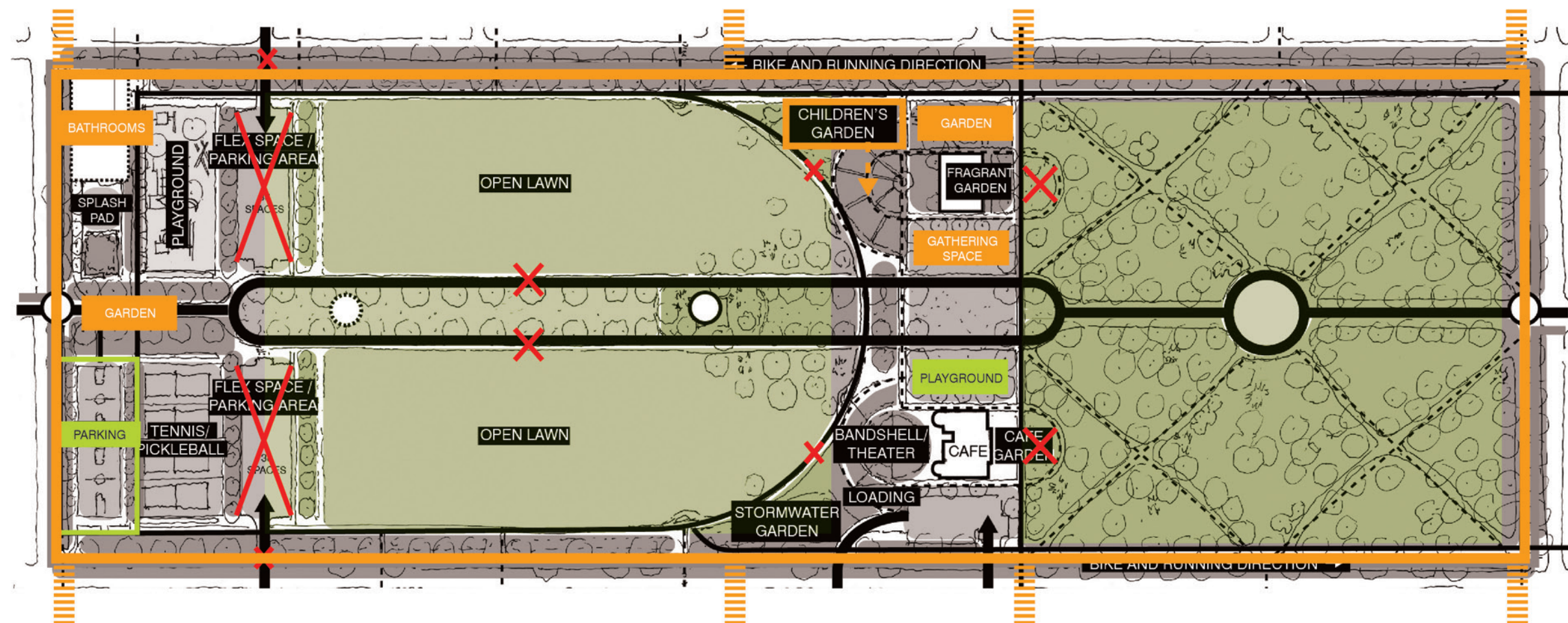
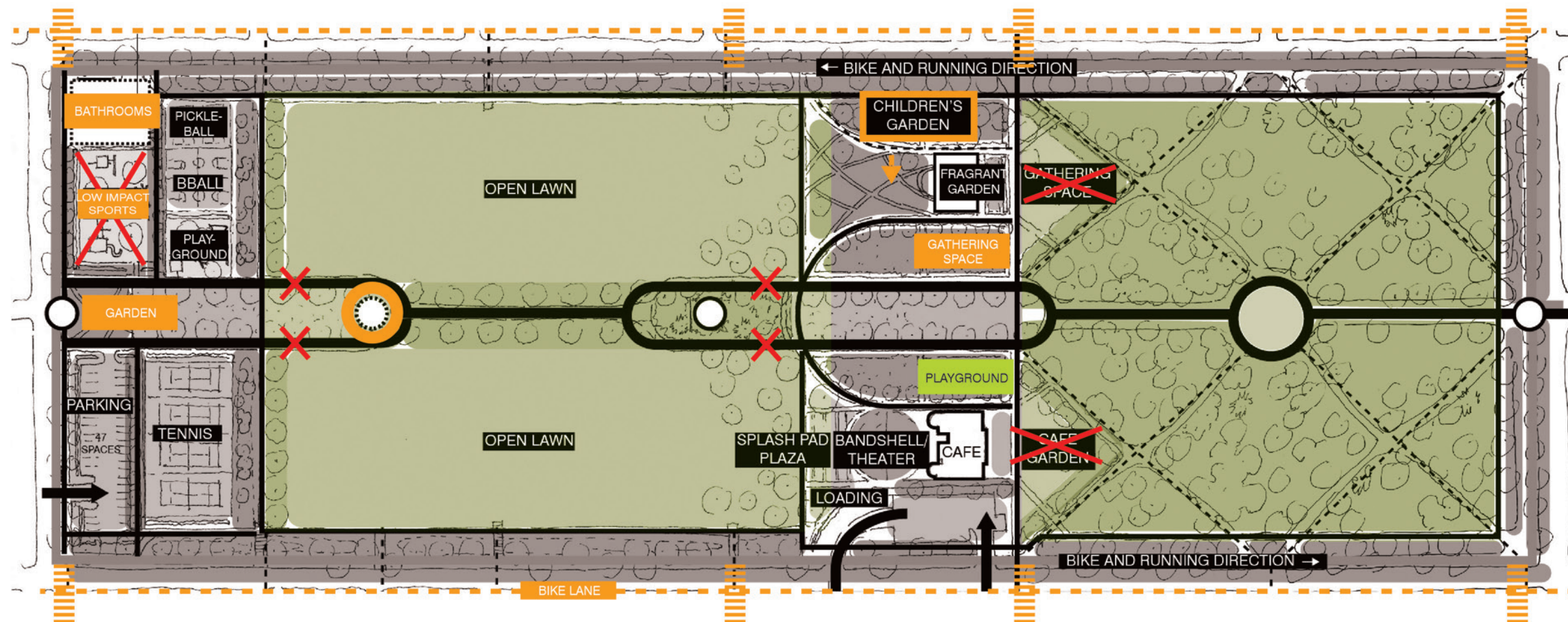
- Arching path connecting East and West
- Additional parking in park
- New garden or gathering spaces in North section
- Paths on outer edge of central spine
- Playground directly adjacent to street

PURSUE

- Bathrooms
- Dedicated bike lane
- Traffic calming measures
- New monument / art
- New garden and gathering spaces
- Children's garden (closer to center of park)
- More events
- Improved bandshell
- Bike lane located in street \*

MAINTAIN

- As much existing green space as possible
- Parking at existing location
- Rotary Club playground
- Tree canopy
- Historic integrity



Traffic table

\*Not within Master Plan scope



## ADDITIONAL COMMUNITY FEEDBACK

These smaller elements will be addressed in the final phase of the design

- ✓ Add drinking fountains
- ✓ Add more seating
- ✓ Add safer lighting
- ✓ Add more trash and recycling bins
- ✓ Add bike deterrents at North and South Ends at Central Spine

